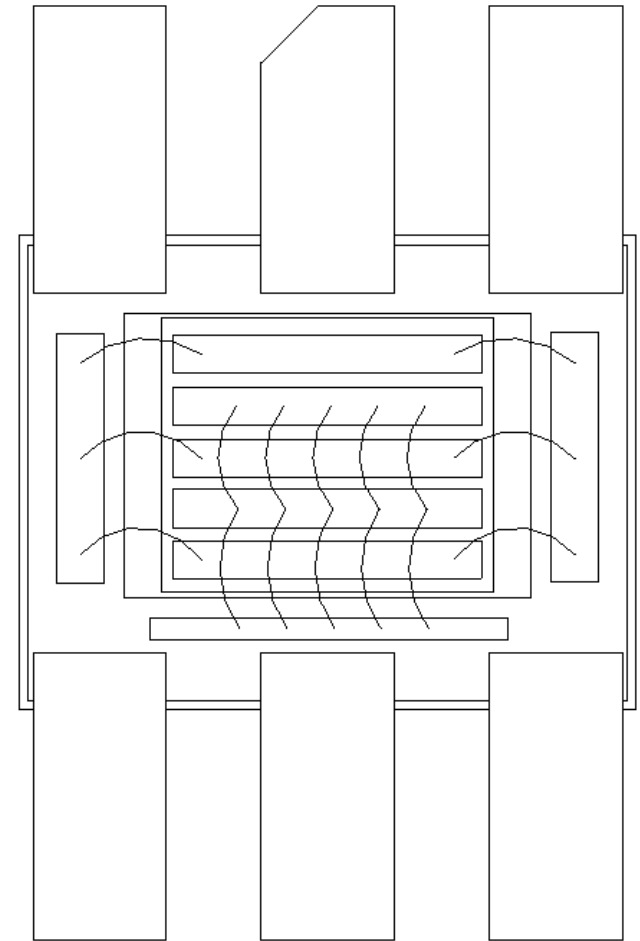
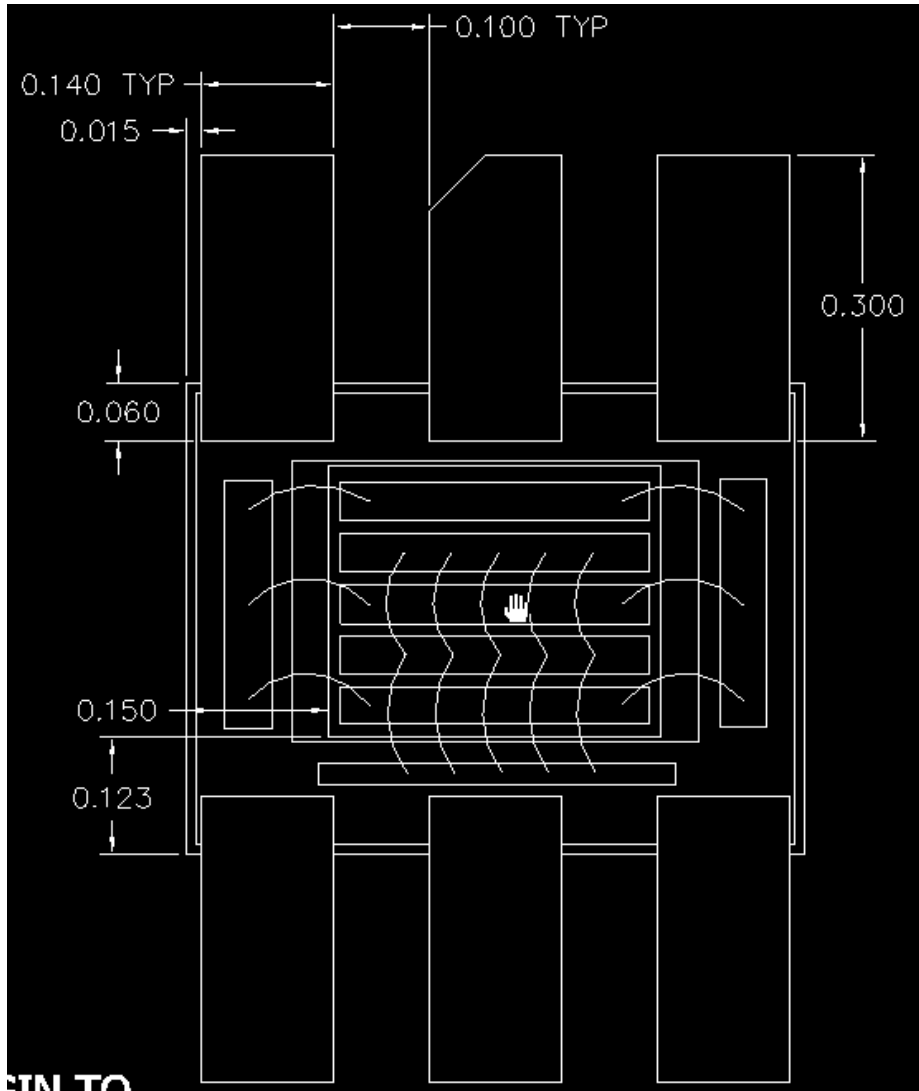
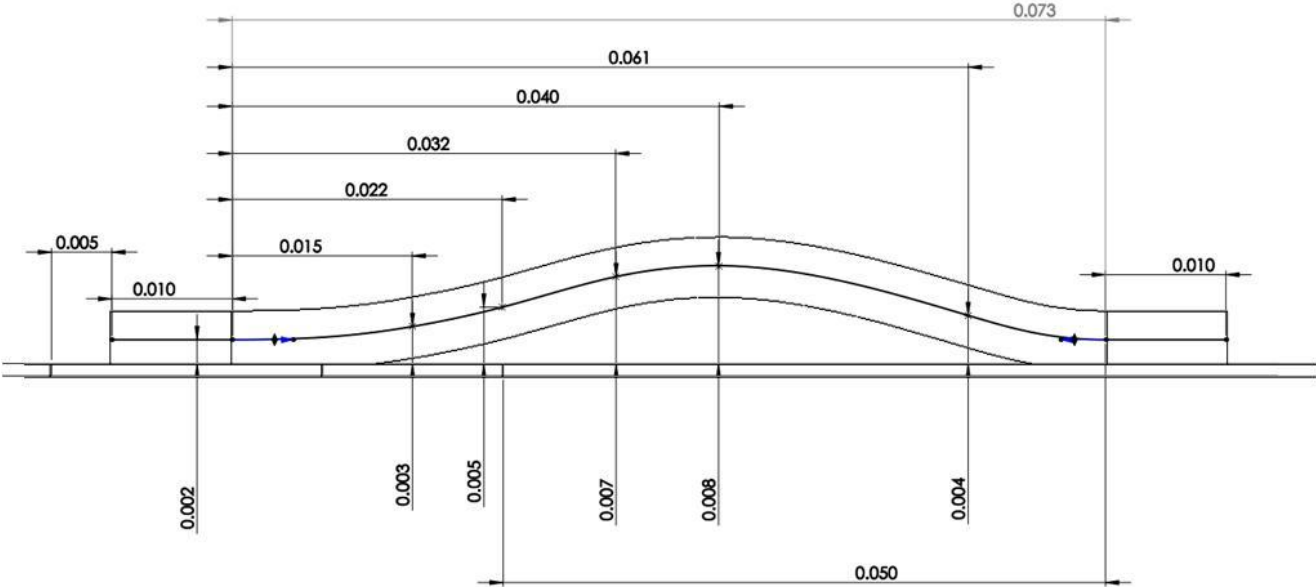


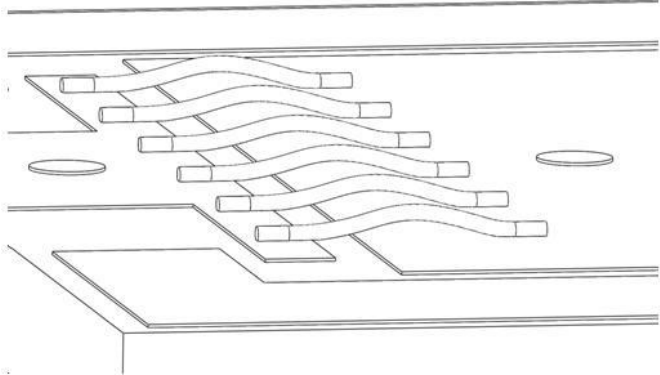
Microsemi PPG - ARF300 Assembly



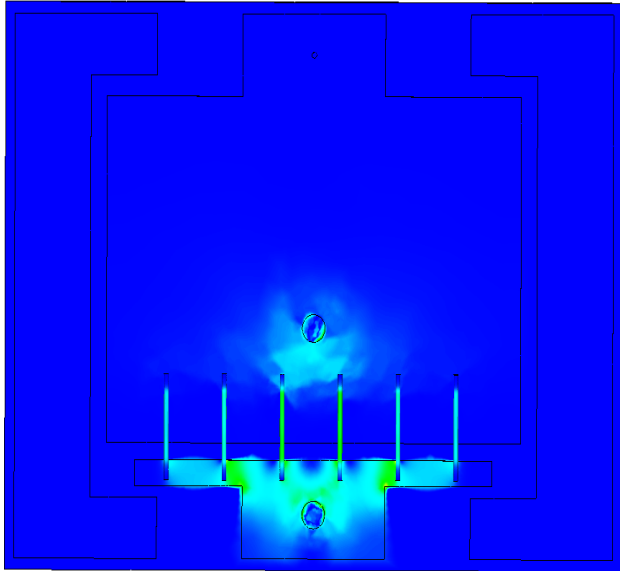
ARF 300 - Bond Wire Length Model



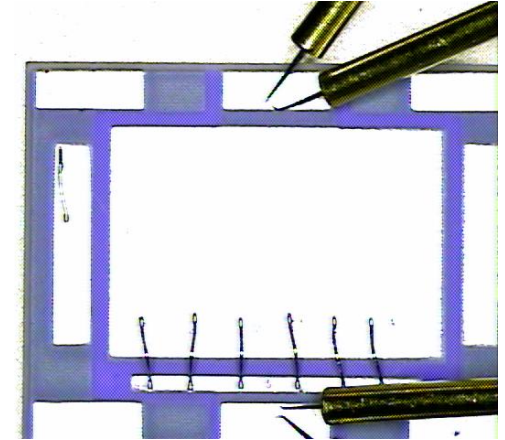
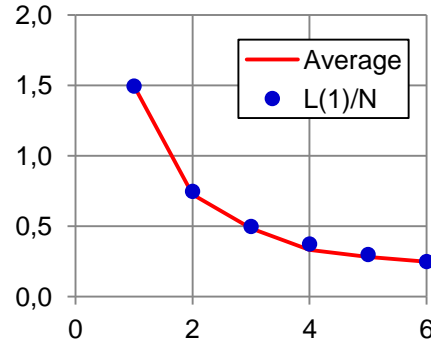
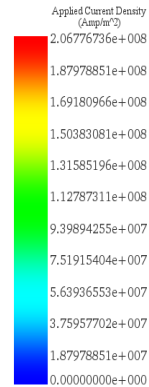
- Spline length- .074"
- Total length - .094"



ARF300 - Wire Inductance Data



Inductance (H)	Solid Coil - 1
Solid Coil - 1	2.379721e-010
	Resistance(Ohms)
Solid Coil - 1	6.856908e-004



Laboratory Measurement				
# Wires	Meas 1	Meas 2	Average	L(1)/n
N	nH	nH	nH	nH
6	0.246	0.251	0.249	0.249
5	0.279	0.285	0.282	0.299
4	0.334	0.332	0.333	0.374
3	0.499	0.470	0.485	0.498
2	0.764	0.688	0.726	0.748
1	1.460	1.530	1.495	1.495

# of Wires	Meas 1 nH	Meas 2 nH
6	.246	.251
5	.279	.285
4	.334	.332
3	.399	.570
2	.764	.688
1	1.46	1.53
22nH Inductor	23.89	24.01

Grover, Round Wire for L and M				
r, in	l, in	s, in	L, nH	M, nH
0.0025	0.085	0.1	1.50	0.17

Single wire of 0.085" has L of 1.5 nH